

## IP-Enabled Remote KVM Management

Manage servers  
and KVM equipment  
from anywhere, at any  
time with the latest  
in IP-enabled KVM  
switches.



- » Ideal for managing multilocation data centers and branch offices.
- » Simplify workflow and reduce hassles related to downtime and travel.
- » Choose from CX KVM switches, KVM trays, and even power options.

## ServSwitch CX Uno with IP

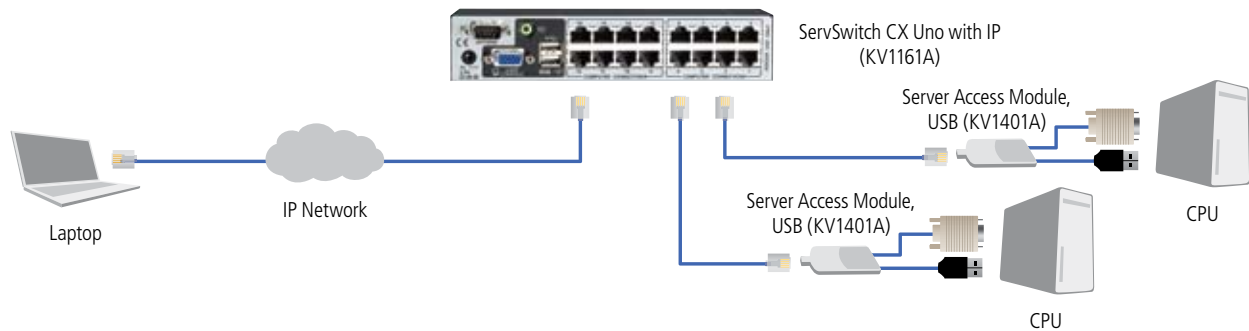
---



KV1161A



KV4161A



### KVMoIP access technology

KVM over IP (KVMoIP) access technology extends keyboard, video, and mouse (KVM) signals from any computer or server over TCP/IP via a LAN, a WAN, or an Internet connection. Through this KVMoIP connection, remote users can access and control a number of servers simultaneously from wherever they are, inside or outside the organization, anywhere in the world. This technology works in diverse hardware environments and is ideal for managing multilocation data centers and branch offices.

These capabilities translate into real savings for companies dealing with the proliferation of servers in multiple offices, particularly for corporations and government agencies required to deliver 24/7 uptime and real-time access to mission-critical servers 365 days a year.

KVMoIP products combine the advantages of remote access software with the benefits of KVM switching technology. Like most KVM switches, KVMoIP products don't require software to be loaded on the host computers. They interface directly with the keyboard, monitor, and mouse connectors of the host computer or KVM switch. Circuitry within the KVMoIP device digitizes the incoming video signal and processes it into digital data that is communicated to a viewer program running on a remote client computer over a LAN/WAN or the public Internet.

By addressing network issues from a remote location, you can simply manage issues from your desk, or even save yourself the hassle of traveling to a site in the middle of the night. Use a browser-based connection, even a cell phone or PDA, to reboot or administer a roomful of servers remotely—a real convenience.

KVMoIP products that feature virtual media technology to take that convenience even further. They enable remote users to effortlessly move files from a mass storage device—a USB flash drive or CD-ROM drive, for instance—from their location to the computer on which they're working. Cost savings are realized through reduced downtime and less travel. Plus, in some cases, there's no need to replace existing KVM switches with proprietary ones to get a KVMoIP server-control solution.

### The Black Box difference

Black Box® ServSwitch™ KVMoIP solutions—which include KVM switches, KVM trays, and management software—go further than many other KVMoIP products on the market. They not only enable you to access remote servers, but they do it at the BIOS level, which is important when you need to troubleshoot from off-site and don't want to dispatch a technician. Install or recover software applications and install OS patches from your location anywhere in the world. Plus this BIOS-level control is possible regardless of the server's brand or model and even works if the operating system is down.

---

## ServSwitch CX Uno KVM Switch with IP

The ServSwitch CX Uno KVM Switch with IP provides server access management for one user in a multiplatform KVM switch with IP. The switch uses CATx twisted-pair cable to connect one local or one IP user to up to 16 servers. The ServSwitch CX Uno enables IP access to servers across any IP network. Users access and switch remotely over a private intranet or over the Internet with a Java® enabled Web browser or VNC client.

### Tight security

Although the ServSwitch Uno KVM Switch with IP can be set up behind a network firewall, it has the security features it needs to be safe as a standalone switch. This enterprise-grade KVM switch uses AES128 bit encryption and RSA2048 authentication, ensuring the control system remains secure at all times. It's possible to configure up to 16 separate users internally with unique access privileges, all of which are stored only within the switch.

### Easy connections

User stations and servers are connected via lightweight and inexpensive CAT5, CAT5e, or CAT6 UTP cable—no bulky KVM cables are needed. UTP cable provides more distance than KVM cable to connect the servers. Server Access Modules (SAMs) provide keyboard, video, mouse, and speaker connections. Servers can be placed 32 feet (9.8 m) from the switch.

### Green technology

ServSwitch CX Uno KVM Switches with IP feature Ecopulse circuitry. Ecopulse powers down unused circuits when they are not required. Over the life of the switches, this reduction of power saves significant resources.

The ServSwitch CX Uno enables IP access to servers across any IP network. Users access and switch remotely over a private intranet or over the Internet with a Java enabled Web browser or VNC client.

### Other features

- DDC emulation is enhanced by DC balancing to ensure true colors.
- Cascade up to 256 servers.
- Includes free WIZARD.NET management software.



## CATx Integrated KVM Tray Modules with IP

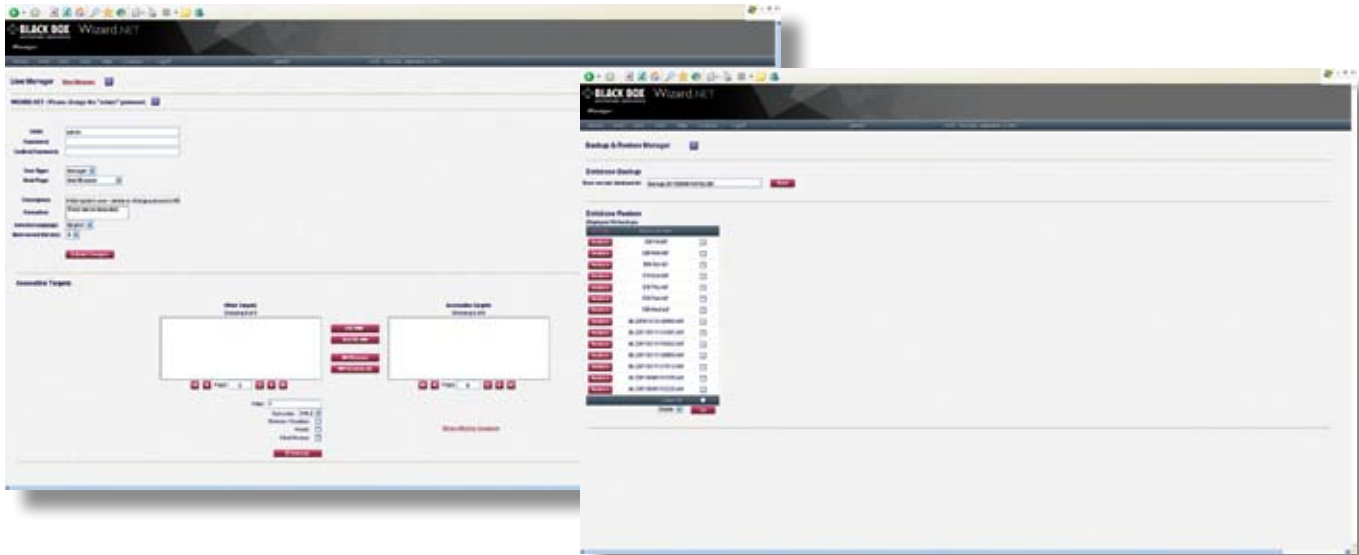
In addition to the CX switches with IP, Black Box offers KVM trays with IP-enabled switch modules. The tray modules provide multiplatform support using USB, PS/2, or Sun compatible SAMs, and CATx patch cables ensure a neat rack installation. The KVMoIP tray modules enable network users to control the switching module from a computer on the LAN or WAN using a VNC viewer or Web browser. For high availability, the KVT517A-16CATX-4IP enables up to four KVMoIP users to simultaneously access different computers at the same time.

Connecting the CX Uno to the CATx IP module expands the system by enabling users to control a serial power switch, enable password security access with user profiles, respond to RS-232 switching commands, and much more. Additionally, KVMoIP modules come with free WIZARD.NET management software, simplifying the access, security, and management systems with larger numbers of computers or users.

# WIZARD.NET

## WIZARD.NET

ServSwitch WIZARD.NET is the professional management suite for total IP device control, management, and connectivity. It operates as a server application running on a system that can be completely separate from any of the KVM over IP devices (in this case, CX Uno and CATx tray modules with IP access). It enables you to control all your KVMoIP devices and user credentials from a single web page. It is convenient and ultra-secure, providing HTTPS encryption for security, and yet devices connect easily with cryptographic authorization tokens. The Web-based interface makes it easy to see the current connection status of managed devices and computers.



Simple Web-based control for easy navigation.

Item	Code	List Price	Item	Code	List Price
ServSwitch CX Uno KVM Switch with IP			ServSwitch CX Server Access Modules		
8-Port	KV1081A	<b>\$1195.95</b>	PS/2	KV1400A	<b>\$79.95</b>
16-Port	KV1161A	<b>\$1394.95</b>	USB	KV1401A	<b>\$79.95</b>
ServSwitch CX Quad IP	KV4161A	<b>\$1,749.95</b>	PS/2 with Audio	KV1402A	<b>\$99.95</b>
ServView™ V with CATx Integrated KVM Tray Module			USB with Audio	KV1403A	<b>\$99.95</b>
8-Port, CATx with IP	KVT517A-8CATX-1IP	<b>\$2,439.95</b>	Sun with Audio	KV1404A	<b>\$99.95</b>
16-Port, CATx with IP	KVT517A-16CATX-1IP	<b>\$2,639.95</b>	ServSwitch Dual CATx Server Access Modules		
16-Port, CATx with IP, 4-User	KVT517A-16CATX-4IP	<b>\$3,139.95</b>	USB	KV1405A	<b>\$118.95</b>
ServTray™ Complete, 17" Screen, with CATx Integrated KVM Tray Module			USB and Audio	KV1406A	<b>\$139.95</b>
8-Port, CATx with IP	KVT417A-8CATX-1IP	<b>\$2,289.95</b>	ServSwitch Quad IP CATx SAM, Serial	KV1407A	<b>\$79.95</b>
16-Port, CATx with IP	KVT417A-16CATX-1IP	<b>\$2,489.95</b>	Outlet-Managed PDUs		
16-Port, CATx with IP, 4-User	KVT417A-16CATX-4IP	<b>\$3,089.95</b>	8-Outlet, Single-Circuit	MPSH8-S20-120V	<b>\$676.95</b>
			16-Outlet, Dual-Circuit	MPSH16-D20-120V	<b>\$986.95</b>
			Elite™ Managed Power Controllers		
			8-Outlet, Single-Circuit, 120 VAC, 20-Amp	PSH8S20-120V	<b>\$695.00</b>
			16-Outlet, Single-Circuit, 120 VAC, 20-Amp	PSH16-S30-120V	<b>\$1297.00</b>

NOTE: For more managed power options, visit [blackbox.com/go/EMPC](http://blackbox.com/go/EMPC).

© Copyright 2011. Black Box Corporation. All rights reserved. Printed in U.S.A. Black Box® and the Double Diamond logo are registered trademarks, and ServSwitch™, ServView™, ServTray™, and Elite™ are trademarks, of BB Technologies, Inc. Any third-party trademarks appearing in this brochure are acknowledged to be the property of their respective owners.

KV1081A\_(27156)-8-11v1