

Wallmount ClimateCab™

Protect and cool equipment in areas without air conditioning.

» Install rackmount equipment in less-than-ideal environments with this NEMA 12 rated cabinet.



Wallmount ClimateCab

When you need to install rackmount equipment in less-than-ideal environments or in areas without existing cooling infrastructure, ClimateCab NEMA 12 Wallmount Cabinets are your answer. Their self-contained cooling system keeps your equipment housed in ideal conditions in virtually any location.

On the double-hinged models, the cabinet swings away from either a front or a rear door, enabling access to the rear of your equipment. Single-hinged models in which only the front door opens are also available.



- NEMA 12 rated for protection against falling dirt, circulating dust, lint, debris, and splashing liquids in indoor environments.
- Includes 19" rails with M6 mounting holes.
- Scratch-resistant safety glass window provides easy viewing.
- Fully welded body and door construction.
- Robust 12-gauge frame and 14 or 16 gauge sides and doors. Seamless door gaskets keep out dust and contaminants.
- **GO GREEN**—save energy and money by cooling only the cabinet rather than the whole room or IT center.

ClimateCab with Air-Conditioning

The AC models (RMW5130AC, RMW5110AC) are perfect for harsh environments and remote locations without cooling infrastructure. Air-conditioning units keep equipment cool even with temperatures up to 130° F (54.4° C). A closed-loop cooling system recirculates air in the cabinet and keeps outside air out, while an internal evaporator eliminates condensation.

ClimateCab with Air-Conditioning and Gland Plates

The ClimateCab with Air-Conditioning and Gland Plates (RWM5110ACG) has all the features of the AC models plus gland plates for cable access on the top and bottom of the cabinet.

NOTE: ClimateCab models with air-conditioning ship without the air-conditioning mounted. Mounting the AC unit takes just a few minutes.



ClimateCab with Fan

Use the fan models (RMW5120AF, RMW5100AF) in areas where you need protection from the elements, but temperature control is not a significant issue. Air filters on the bottom can be easily removed for cleaning without opening the cabinet. A pagoda-style fan top provides protection from falling liquids and debris.

Additional Features

The cabinet includes 10-32 tapped rails and twenty 10-32 screws. Optional square-holed rack angles are available for equipment mounting flexibility. Convenient studs are provided on the door and body for bonding and grounding.

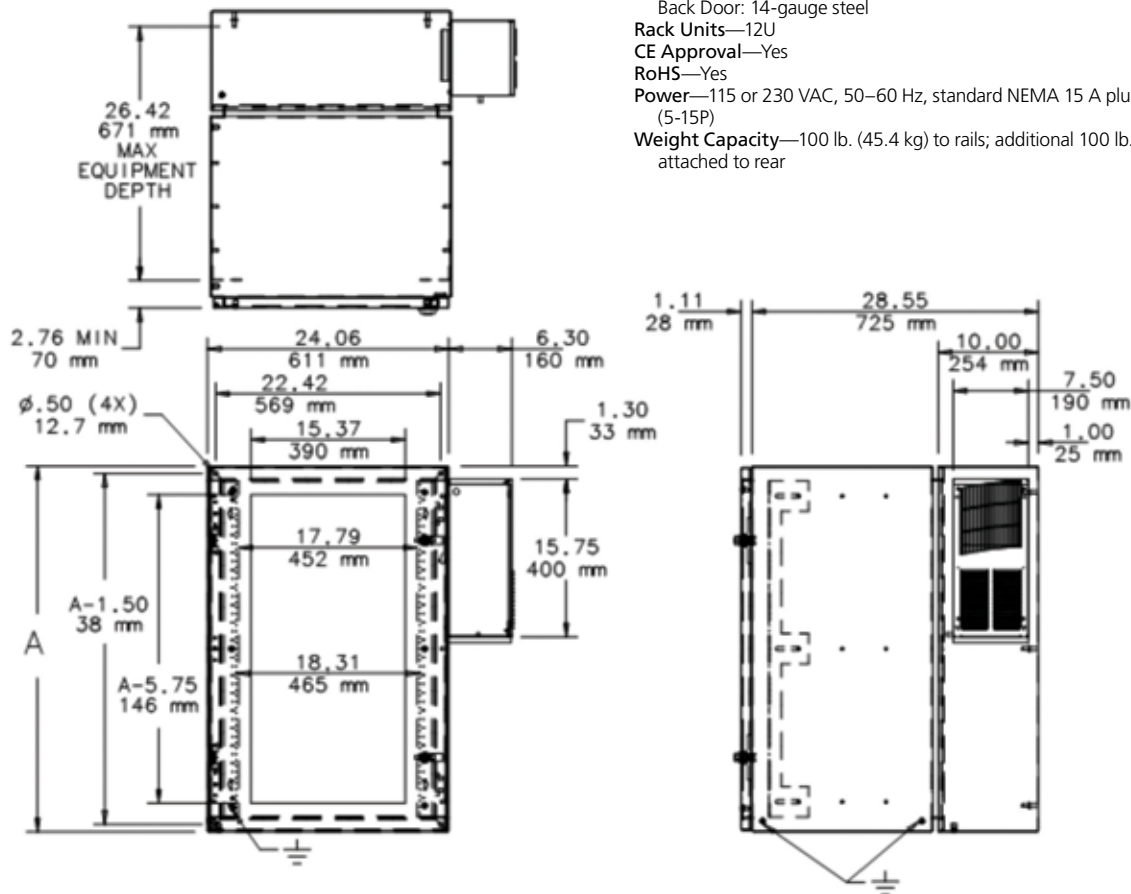
The cabinet is finished in 7035 RAL light gray, textured, low-gloss polyester powder paint. Other paint finishes are available. The window is made from clear scratch- and impact-resistant safety glass.

Buyer's Guide and Specs

Buyer's Guide | Wallmount ClimateCab

Hinge	Exterior Height	Cabinet Width	Total Width	Exterior Depth	Rack Units	Equipment Depth	Weight Capacity	Cooling Capacity	Product Code
Single	24"	24"	30.3"	24"	12U	21.2"	100 lb.	800 BTU (235 W)	RMW5130AC-R2
Double			30.3"	29.1"		26.4"		800 BTU (235 W)	RMW5110AC-R2
Double			30.3"	29.1"		26.4"		800 BTU (235 W)	RWM5110ACG-R2
Single			24"	24"		21.2"		Fan/Ambient Air	RMW5120AF
Double			24"	24"		21.2"		Fan/Ambient Air	RMW5100AF

Cabinet Dimensions



TECH SPECS

Construction—Body: Welded 14-gauge steel;
 Front Door: 14-gauge steel with safety glass window;
 Back Door: 14-gauge steel

Rack Units—12U

CE Approval—Yes

RoHS—Yes

Power—115 or 230 VAC, 50–60 Hz, standard NEMA 15 A plug internal to the cabinet (5-15P)

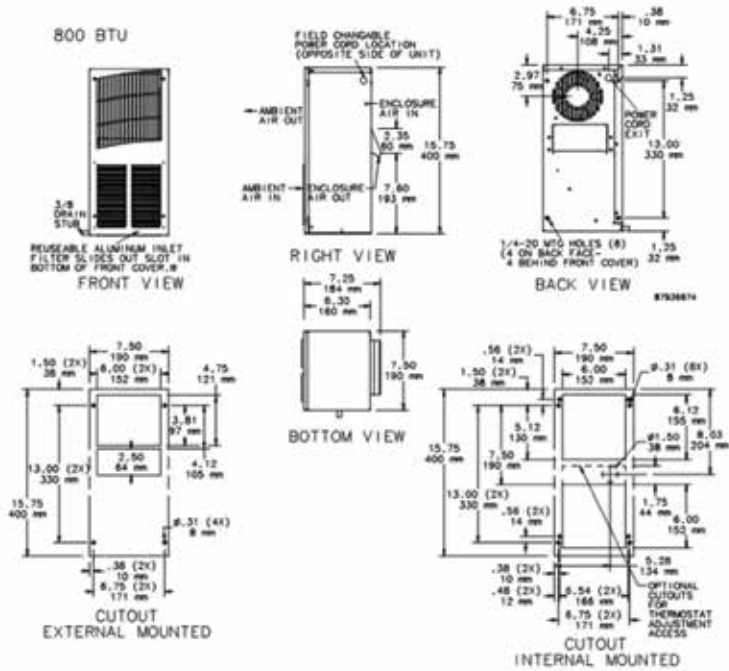
Weight Capacity—100 lb. (45.4 kg) to rails; additional 100 lb. (45.4 kg) may be attached to rear

NOTE: Unit shown is 24U variant with 800-BTU Air Conditioner. 2000-BTU unit has a 12" (305-mm) deep base.

Wallmount ClimateCab

Dimensions and Capacity Curves

800-BTU Air Conditioner Dimensions



Capacity Curves for 800-BTU Air Conditioner

